



## WinArj is a Windows-Shell for ARJ-ARCHIVES.

The program lets you archive, add to a archive, create self-extracting archives, list archives, extract archives and extract files from a ARJ ARCHIVE.

WinArj will also list and extract files from archives with the following file-extensions:

**ZIP, ZOO, LHA, LZ?, ARC, PAK, TAR, SIT, PIT, GZ, Z and Microsoft compressed files.(\*.??\_)**

WinArj has a build-in viewer, to view Text-Files, the files can be send to the printer or copied to the clipboard.

---

- The Latest Version of WinArj and Winarj95 is at:
- <http://www.ozemail.com.au/~lasoft>
- <ftp.coast.net/simtel/win3/archiver>
- <ftp.simtel.net/simtel/win95/compress/Winarj95.exe>
- [www.simtel.net/simtel.net/win95/compress/Winarj95.exe](http://www.simtel.net/simtel.net/win95/compress/Winarj95.exe)

### Add files to a Archive

Archive Files

Archive Name

Destination Drive

Extract Archive

Extract Files

Extract Files to

List Archive

Multi Volumes

Multiple Disks

Selecting Files

Self Ext

SelfExt Arch

Source Drive and Files

Uninstal

View a File



## **Extract Files**

To extract files from a [ARCHIVE](#), you must first list the archive, from where the files are to be extracted from.

Next you select the [DESTINATION](#). Select a Drive and Directory to extract the files to.

Select the file or files to be extracted and press continue

**See also**

[List Archive](#)

[View a File](#)



## Extract Archive

|    |   |  |  |
|----|---|--|--|
| 2] | ↓ | <b>Extract Files</b><br><input type="radio"/> List Archive<br><input type="radio"/> Extract Files<br><input checked="" type="radio"/> Extract Archive<br><input type="radio"/> Archive Files | <b>Extract Archives from</b><br><input checked="" type="radio"/> single Disk<br><b>OR</b><br><input type="radio"/> multiple Disk's |
|    |   | <b>Archive Name:</b><br>*.*  |  |

Select the Archive to be extracted, select the destination directory, (Extract Files to:), Select CONTINUE. The file extension must be "EXE" or "ARJ".

### See also

[Extract Files to](#)  
[Extract Files](#)



## Add Files to a Archive

To add files to a Archive select the files to be archived, select the archive and press continue.

If the archive you selected already exist, you will be prompted be a MESSAGE-BOX where you can select.



**Select Add to the Archive**

**Press for O.K.**

select add to the archive.

See also

[Multi Volumes](#)

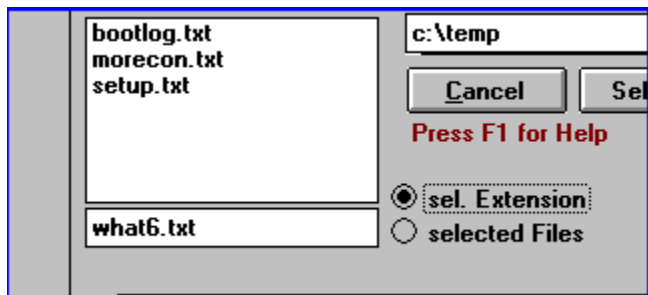
[Archive Files](#)



## Archive Files

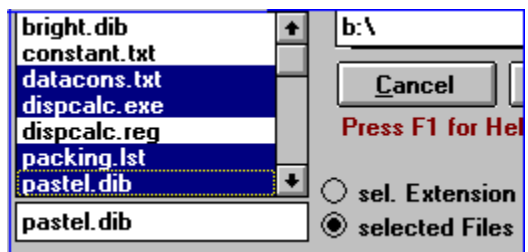
In the SOURCE DRIVE, DIR AND FILE section, select a directory, SELECT the files to be archived by there File-Extension

"Sel.Extension"



or select the files by selecting the option

"selected Files"



See also

[Add Files to a Archive](#)



## **Self Ext**

### **Self Extracting**


This option will change a archive with a arj extension in to a Self extracting ARCHIVE

### **See also**

[SelfExt Archives](#)



## Multi Volumes

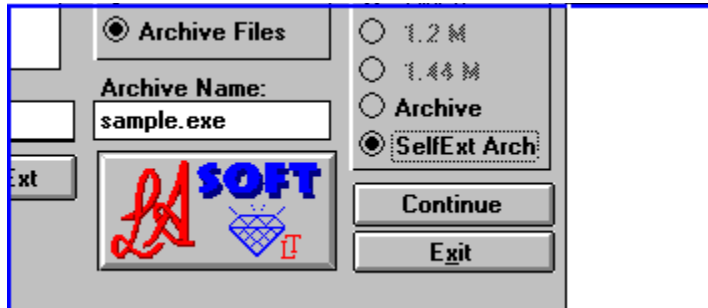
|  |   |
|--|---|
| <b>Extract Files</b><br><input type="radio"/> List Archive<br><input type="radio"/> Extract Files<br><input type="radio"/> Extract Archive<br><input checked="" type="radio"/> Archive Files | <b>Multi Volumes</b><br><input checked="" type="checkbox"/> Multi Volume<br><input type="radio"/> 360 k<br><input type="radio"/> 720 k<br><input type="radio"/> 1.2 M<br><input checked="" type="radio"/> 1.44 M<br><input type="radio"/> 50 K <input type="button" value="◀"/> <input type="button" value="▶"/><br><input type="radio"/> Archive<br><input checked="" type="radio"/> SelfExt Arch. |
| Archive Name:<br><input type="text" value="zip.exe"/>  | <input type="button" value="Continue"/>   |
|   | <input type="button" value="View"/> <input type="button" value="Exit"/>   |

Selecting Multi Volume lets you archive your files over more than one disk. If you select e.g. 360 k, then your files will be archived and compressed, to fit 360k DISK'S, you also can select a [specific file size](#) for your archive.

---



## SelfExt Arch



This Option lets you archive the selected files and/or directories in to a [Self-Extracting](#)-Archive.

See also

[Convert to selfextracting archive](#)





## **Extract Files To**

This is the destination for your files, if the [destination](#) directory doesn't exist and if the name is legal, the program will create the destination directory.

---

**See also**

**[Destination Drive](#)**



### Archive Name

Default is the directory name, where the files to be compressed, are located (e.g. C:\TEMP\TEST , would be TEST.ARJ or TEST.EXE, depending if you selected "ARCHIVE" or SELFEXT ARCHIVE.). If the file name is not suitable, you can enter a new name under "Archive Name:"

---



## Source Drive and Files

### To Archive Files:

Select the DRIVE, DIRECTORY and ARJ Archive (you can also use Wildcards here) e.g. You can select files by "txt" (all files with a txt extension, e.g. TEXT.TXT) or "\*" (all files selected).

Only enter the last 3 letters e.g. "exe" and not ".exe"

The same goes for wild cards enter "\*" and not ".\*"

### See also

#### Archive Files

### To List Files:

Select the DRIVE, DIRECTORY and ARJ Archive (can be ARJ or EXE extension) or a archive with one of the following extensions:

---

**ZIP, ZOO, LHA, LZ?, ARC, PAK, TAR, SIT, PIT, GZ, Z and Microsoft compressed files.**

---

From there you can extract a single file, multiple files or the hole archive. WinArj also lets you view Text-Files.

**You can only View Or Extract Files and Archives from a ARJ ARCHIVE!**

---

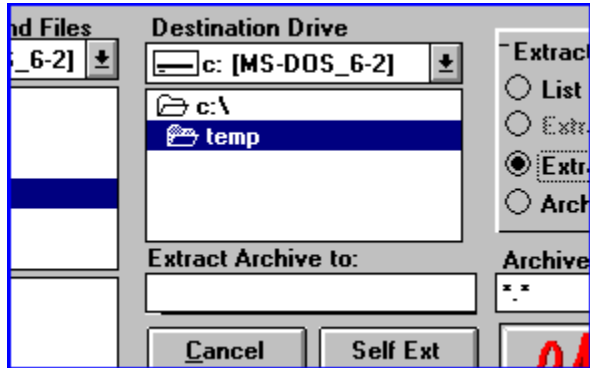
### See also

#### List Archive

#### View a File



### Destination Drive



This is the directory where you can extract your files to, or save your ARCHIVED files to.

---



## **Multiple Disks**

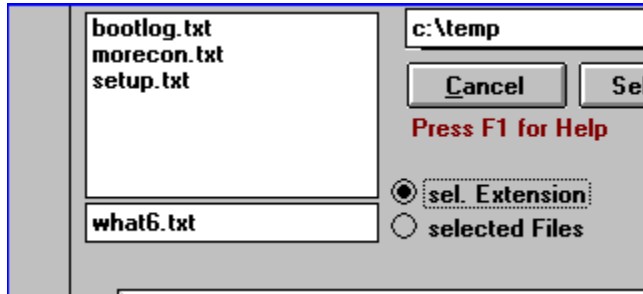
Select this option to extract archives from more than one disk. If you extract direct from floppy disks, you will get a BEEP to prompt you for the next disk. A faster way would be to copy all the disks to a temp. directory and then extract your files to your destination directory

**See also**

**[Multi Volumes](#)**



## Selecting Files



Files can be selected by selecting the "sel.Extension", option button or selecting the "selected Files" option button.

### sel.Extension:

with this option you select files by there file-extension (e.g. "exe" **no separator "."** will select all files with a "exe" extension)

---

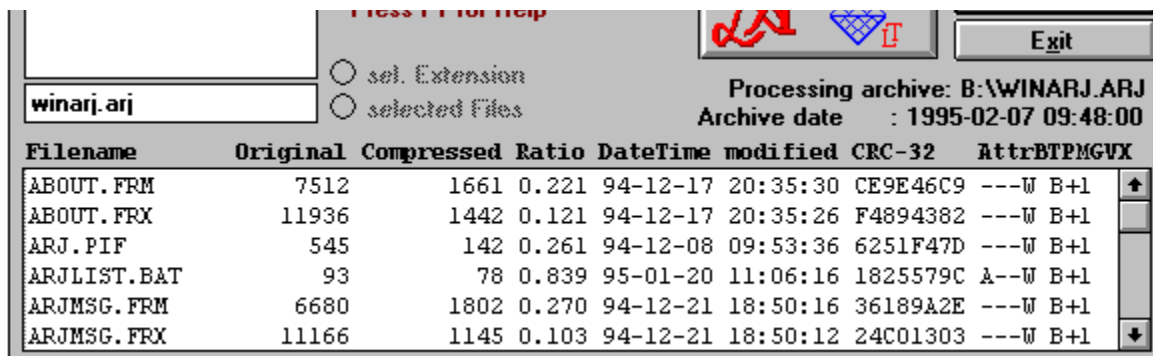
### selected Files:

here you can select one files or you can use multiple-select to extract your files.

---



## List Archive



In the Source-File List select a ARJ-Archive, or a archive with the following extensions:

ZIP, ZOO, LHA, LZ?, ARC, PAK, TAR, SIT, PIT, GZ, Z and Microsoft compressed files.

---

The program then, will list all files with the same extension (if you select "TEST.EXE", the program will list all files with a **exe extension**).

---

There are two ways to change the Listed file "Types"

- 1). you can double-click the file list or
- 2). you can enter the extension of the files to be listed, only enter the extension (e.g. **"exe"**).

Select the archive to be listed, and press Continue. You will get a file list from the selected archive, from where you can select, Files (multiple select is OK) to be extracted to your destination directory.

**You can not extract single files with out listing the archive first.**

To extract a **ARCHIVE**, select the **ARCHIVE**, next select **extract archive** and press **Continue**.



[View a file](#)

The build-in VIEWER lets you view a text-file (from an ARJ Archive), without extracting the archive. You also can send the file to the printer or copy it to the clipboard.

---





### **Recurs SubDirectory's**

If selected all subdirectory's will be included in the archive. Extracting archives with this option selected, will recreate all subdirectory's (if they don't exist) and extract the files in to there original directory's.

---



### **Include Dir**

This option includes the directory with your archive, where the files to be archived, are located in.

When extracting, this option will include the original directory, if it was included in the archive.

---



### **Include Path**

This Option will include the complete path, minus the root directory, in your archive, or when extracting, and the path was included in the archive, the archive will extract in to the original path and directory.

---



## Uninstal

**To Uninstal** WinArj95 installed the following files in the WinArj95 Directory:

WinArj95.exe  
Arj95.pif  
WinArj95.txt  
WinArj95.hlp  
Arj.exe  
Register.txt

WinArj95.ini in your Windows Directory

WinArS95.dll and  
Threed32.ocx in your Windows System Directory

**delete the next file only, if you have NO OTHER VB4 PROGRAMS installed.**  
Threed32.ocx

**use ADD/REMOVE Programs from the Control Panel to Uninstal Winarj95.**  
**The Uninstal Command will not delete THREED32.OCX**

## **Extract Files**

You must List the archive, before you can extract FILES

## **Extract Archive**

You don't have to list the archive first to extract the archive. Select the archive and the destination directory and press continue.

## **Single Disk**

with this option selected, you extract all files from one disk

## **Multiple Disks**

with this option selected, you can extract your files from more than one disk



## **Selecting Multi Volumes**

with this option selected, you can archive your files over more than one disk.

## **360k Disk**

this option will create archives to fit 360k disk's

## **720k Disk's**

this option creates archives to fit 720k disk's.

## **1.2 M**

this option creates archives to fit 1.2 m disk's

**1.44 M**

with this option you create files to fit 1.44 m disk's

## **Create ARJ Archive**

this option will create archives with a **ARJ** extension. You will need a Archiver Program to extract files from this archives.

## **Create Self Ext Archives**

with this option selected, you create Self-Extracting-Archives. This archives are usually a little larger, but they don't need a Archiver program to extract the files.

## **sel.Extension**

Selecting files by there extension. If you select a file with a "txt" extension, the program then, will display all files with a "TXT" extension.

You also can select files by typing the extension in the list-box, e.g. ("**TXT**" only **no separator** ), then all files with a "txt" extension will be selected.



## **selecting Files**

here you can select one, or more files, multiple select is OK

## **Overwrite the Archive**

by selecting this option you don't actually overwrite the archive, the program renames the original file to "filename.**1AR**" and so on for every archive with the same name.

## **Add to the Archive**

selecting this option lets you add more files to the selected archive.

## **Re-Name the Archive**

selecting this option gets you back to the main menu, where you can enter a new name for the archive. ( rename it )

## **Archive**

A Archive is a storage-utility for one or more files, the files are usually compressed, and the file-size is reduced by 30 to 50% on average.

**Destination**

this is the destination drive and/or directory where your archive or your files will be extracted to, or where your archive will be saved to.

## **Selectable Archive Size**

this option lets you select the file-size of multiple archives (in multiples of 10k). If you select 800k all your files will be 800k long.

